

Dear friends

While the teaching we share on a Sunday is important to help us in our understanding of what it means to follow Jesus, being part of a small group is one of the best ways of supporting one another and encouraging each other as we follow Jesus day by day. You can share lief and faith with the same people week by week in a way that isn't possible in services alone.

Before Easter we asked people attending our services to put a sticker on a map to show where they lived. We wanted to see whether there is a need for new Home Groups in areas where we currently don't have any, but where a lot of people live. There seem to be a lot of us who come from the Laira / Prince Rock / Mount Gould area so we will be trying to create at least one group there as a starting point, with hopefully more groups to follow. If you are interested please have a word with me, or one of the Leadership Team. If you would like to join one of our existing groups, please pick up a card in the entrance area.

During this year we want to enhance what we offer in three areas – home groups, caring for one another and praying together. Encouraging people to join home groups will enhance all three areas, which is why this is so important.

Be blessed, be a blessing

Nick



In our **Sunday morning services** up to the end of July we are starting a new series travelling with Paul the Apostle.

## May

- 4th finding The Way on the way
- 11th smuggled to safety
- 18th called, chosen, sent back into the public eye
- 25th Paul prevents a pretend prophet

---

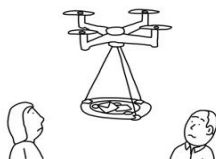
## The Six – a relaxed gathering on Sundays at 6pm

We start with refreshments and usually includes sung worship, something to make us think and a way of interacting with the theme. Leading up to Pentecost we will be considering the difference the Spirit makes to our lives as followers of Jesus.

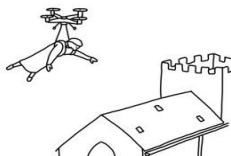
---

# DRONES

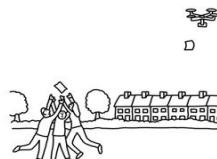
ECCLESIASTICAL USES



TAKING UP THE COLLECTION



SURVEYING THE CHURCH ROOF



DELIVERING NEWSLETTERS AROUND THE PARISH



CHECKING UP ON THE NEIGHBOURS



PUTTING THE STAR ON THE CHURCH CHRISTMAS TREE



SEARCH AND RESCUE

## An evening of music and magic

On **Saturday 7<sup>th</sup> June** at 7.30pm we are hosting a special event to raise funds for St Luke's Hospice. The Lala Choir (who practise here on Monday evenings) will be singing and our resident magician, Nick, will be performing.

It promises to be a wonderful event raising funds for a very deserving cause. To buy tickets go to <https://www.lalachoires.co.uk/product/music-and-magic-2025/>

La La Choirs Presents  
**MUSIC AND MAGIC**

A concert and magic show combined

Raising funds for  **St Luke's**  
Hospice Plymouth

FEATURING Nick Lear  
(Member of the Magic Circle)

**Saturday 7th June 2025**  
7.30pm (Doors open 7pm)

Mutley Baptist Church, Mutley Plain, Plymouth, PL4 6LB

Tickets - [www.lalachoires.co.uk/shop](https://www.lalachoires.co.uk/shop)  
£8 Adults, £4 Under 16s

 La La Choirs  nukeleormagic.uk

## Keeping in touch

We have set up a WhatsApp Community for the church and would love you to join in. This is a useful way of us being able to get in touch with you with news and updates about church events and activities: for example, if a group has had to be cancelled at short notice. It's free to join and nobody will see your details. It's not a group where people comment, it's just for information-sharing. Scan the QR code to join



# Jeremiah's Joy

Mutley Baptist Church  
Mondays 6 -7pm  
(doors open 5:45pm)

Under 12's need to be accompanied by an adult who will be welcome to be part of the singing group too if they wish

To sign up or for more information email us at [hello@jeremiahsjourney.org.uk](mailto:hello@jeremiahsjourney.org.uk)

Jeremiah's Journey are offering this **FREE to join** singing group as a way to bring people who have suffered bereavement together and spread a little joy

You do not have to have used the charity's services to join it's open to all age groups, including adults who were bereaved as children (regardless of your age now)

**CHOOSE US  
AS YOUR  
LOCAL CAUSE**

Co-op Members can support us through the Local Community Fund [membership.coop.co.uk/causes](https://membership.coop.co.uk/causes)



Jeremiah's Joy is part of the @Coopuk Local Community Fund, to find out more about our project and to choose us as your cause, Search

People: Supporting young people to fulfil their potential  
Cause number 89038

01752 424348

[jeremiahsjourney.org.uk](https://jeremiahsjourney.org.uk)

## For your prayers

*And pray in the Spirit on all occasions with all kinds of prayers and requests. With this in mind, be alert and always keep on praying for all the Lord's people. Eph 6:18*

In May our mission prayer focus is on the groups that use our premises. Later in this edition is a list of those who regularly (if not frequently) meet here. As well as praying for these groups, please pray too that our Jesus-like values will be seen in the way that we serve them.

Pray for those who are experiencing long term illness or newly discovered problems – pray for patience, strength and healing. Pray for those who are experiencing problems in relationships – for grace, hope and fairness. We continue to thank God for answering prayers and the many blessings we receive personally and as a church.

Most weeks we send out cards to those who are in pastoral need or we want to encourage. If there is someone whom you feel would be blessed in this way please speak with Nick or email the pastoral team at [pastoral@mutleybaptistchurch.co.uk](mailto:pastoral@mutleybaptistchurch.co.uk)

We continue give thanks to God for all who generously support this church financially, with their time and gifts, and with their prayers. We cannot do this without God or you.

In most morning services we have **Mutley Matters** time – where we share encouragements and needs together. If you would like to share something but would rather not speak, please write it down and give it to Nick or whoever is leading the service and we'll include it.



## Prayer focus

In addition to our own activities our premises are used by many different groups during the week. This month we ask you to pray for the different organisations and people whom we host here. Pray too for Steve Siney who manages all the bookings and makes the rooms ready for these groups.

### Permanent offices

Gifted Women and Plymouth Focus Advice Centre work from their offices that are based here. Gifted Women host training here on some weekdays.

### Weekly

Monday mornings – Elder Tree Seated Pilates

Monday evenings – Jeremiah's Joy and La La choirs

Tuesday daytime – NHS Livewell clinic; Write On (creative writing group)

Tuesday evenings – Great Sea Choir

Thursday daytime – NHS Livewell clinic

Friday mornings – Elder Tree Standing Exercise

### Once a month

Thursday - Plymouth Needleworkers

Friday evening – Old Plymouth Society

Saturday – Plymouth and District Egyptology Society

### Occasional

Monday evenings quarterly – Devon Birds

Plymouth College hold Assemblies in the Sanctuary several times a term

A local GP practice holds training sessions here

Kings School hold a service and University of Plymouth hold their Carols Service here each year

Our next **Church Maintenance Day** is on May 17<sup>th</sup>, and you would be very welcome to join us. If you can wield a paintbrush, sand with sandpaper, sweep with a broom and give some elbow grease, it would be fantastic if you can come along. It will help with catering (often pasties and soup) if you can let us know if you are planning to be there. Speak with Paddy if you aren't sure how your skills can be used (they almost certainly can!).

## Mutley Baptist Church online

Our Sunday morning services are usually available on Zoom.

Meeting ID: **828 9596 2650** Passcode: **155595** If you are at the church and would prefer not to be seen by those watching the live stream please sit in one of the side sections as the camera focuses on the platform.

As well as streaming our services on zoom, you can find out a lot more about us including our beliefs, vision and values as a church and our activities on our website [www.mutleybaptist.co.uk](http://www.mutleybaptist.co.uk)

You can listen to sermons from previous mornings in the 'Sunday Services' page if you scroll down the *What's On* page. You can find links to book for our youth, children and families activities *What's On* page too.

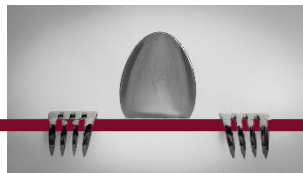


## Please join us for Sunday Lunch

**We're sharing lunch together on Sunday 18 May 2025 at noon in the Main Hall.** Sharing lunches are a wonderful opportunity for us to get to know people we have not had a chance to speak to yet. As well as flavouring our time with delightful conversations we are going to sprinkle the meal with prayer activities around the tables between courses.

For the lunch itself please bring a dish which is enough for up to 8 people as well as a full list of ingredients. As we cannot store leftovers at church any food left at the end will either need to be thrown away, or you can take it home. If you are interested in coming, please sign up on the sheet at the back of Church letting us know what sort of food you are planning to bring.

Hope to see you there!



## Church Meeting

Our next Church Meeting for members is on **Sunday 6<sup>th</sup> July at 12pm** in the Main Hall and on Zoom.

## General information

The church office is usually open from 10am to 5pm Tuesday - Thursday

Address: Mutley Plain, Mutley, Plymouth, Devon, PL4 6LB (01752) 203346

Email: [office@mutleybaptistchurch.co.uk](mailto:office@mutleybaptistchurch.co.uk)

Rev Nick Lear (Minister) - [nicklear@mutleybaptistchurch.co.uk](mailto:nicklear@mutleybaptistchurch.co.uk) 07869 809064 (not Saturday)

Beth Hemes (Children's Families' and Youth pastor) - [beth@mutleybaptistchurch.co.uk](mailto:beth@mutleybaptistchurch.co.uk)

Fiona Spicer (Community pastor) - [fiona@mutleybaptistchurch.co.uk](mailto:fiona@mutleybaptistchurch.co.uk)

## Sunday Services

10am in the Sanctuary (with groups for children and young people) and 6pm in the Spurgeon Hall (a more informal service)

## Home Groups (term time)

Hartley and Zoom	Tuesdays	Joy Sutton
Woolwell	Tuesdays	Paddy and Karen Allen
Mutley	Wednesdays	Fiona & John Spicer
Stoke	Wednesdays	Kate & Steve Brown

Contact the church office for more details, or pick up a card.

## Youth children and families groups (term time)

contact Jane Frost or Kelly Thomas - [yfadmin@mutleybaptistchurch.co.uk](mailto:yfadmin@mutleybaptistchurch.co.uk) or book online on our website

Buzzy Bees Messy Mondays - Monday mornings

Buzzy Bees Stay and Play—Wednesday mornings

Baby Bees— Friday afternoons

Lighthouse Café and Supernova Thursday evenings

MY1 and MY2—Thursday evenings

Mutley Youth, Kids' church and Creche—Sunday mornings

**Cosy Corner** Tuesdays from 12-2pm in the Lounge (Closed in School Holidays)

**Bigger Table** Thursdays 12noon—1pm in the Hall meal and bags of food (£1.50 each)

**Mission Prayer** usually 1st Monday each month in the Lounge at 7.30pm.

**Pastoral team** Wednesdays 11am - [nicklear@mutleybaptistchurch.co.uk](mailto:nicklear@mutleybaptistchurch.co.uk)

Please send any items for inclusion in the next edition of Mutley Mutters to Nick by 24th of the preceding month. There's always up to date information on our Facebook & Instagram pages and the 'What's on?' section of our website: [www.mutleybaptistchurch.co.uk](http://www.mutleybaptistchurch.co.uk)